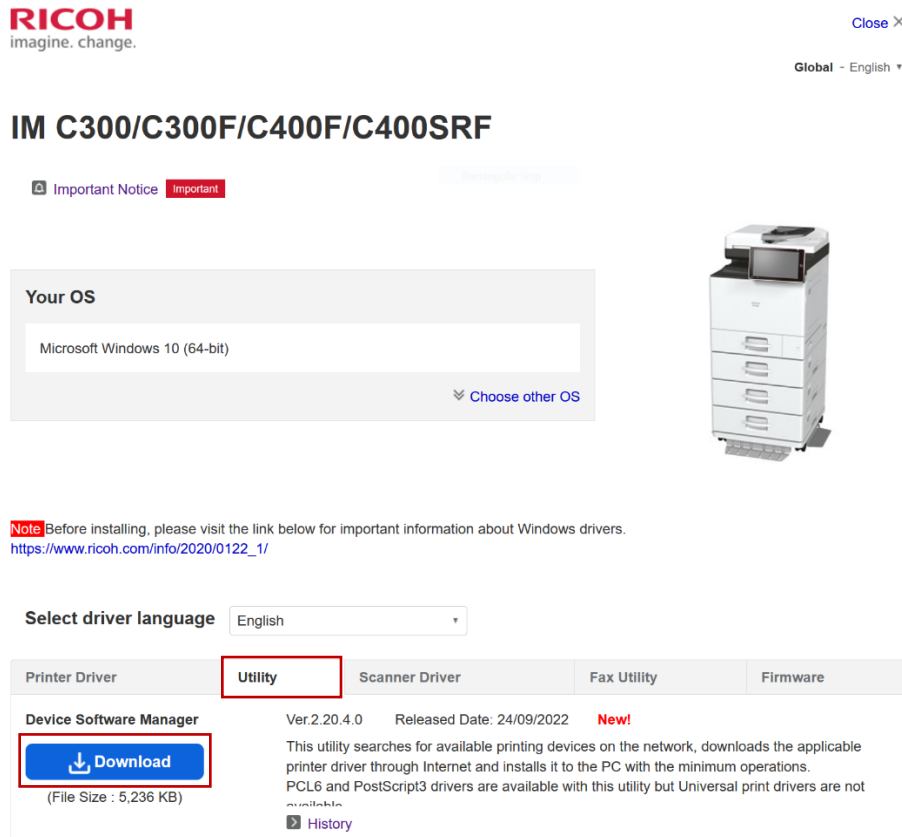


2022 IBF Ricoh IM C300 Printer Installation for Windows (macOS → p.5 | Linux → p.7)

1) Download the Ricoh Device Software Manager from the “Utility” tab

http://support.ricoh.com/bb/html/dr_ut_e/re2/model/imc300/imc300.htm



RICOH
imagine. change.

Close X

Global - English ▼

IM C300/C300F/C400F/C400SRF

Important Notice **Important**

Your OS

Microsoft Windows 10 (64-bit)

Choose other OS

Note Before installing, please visit the link below for important information about Windows drivers.
https://www.ricoh.com/info/2020/0122_1/

Select driver language English

Printer Driver **Utility** Scanner Driver Fax Utility Firmware

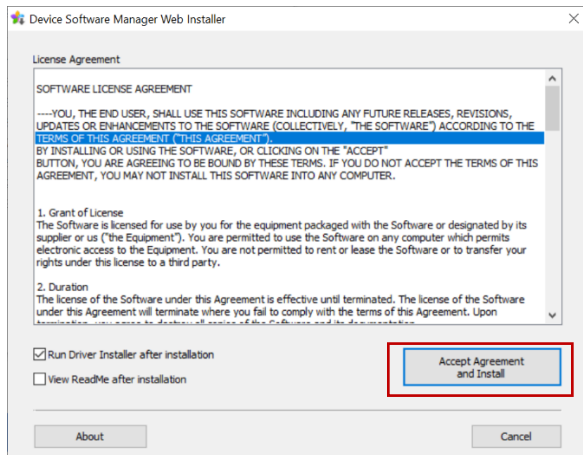
Device Software Manager Ver.2.20.4.0 Released Date: 24/09/2022 **New!**

Download
(File Size : 5,236 KB)

This utility searches for available printing devices on the network, downloads the applicable printer driver through Internet and installs it to the PC with the minimum operations. PCL6 and PostScript3 drivers are available with this utility but Universal print drivers are not available.

History

2) Install it



Device Software Manager Web Installer

License Agreement

SOFTWARE LICENSE AGREEMENT

-----YOU, THE END USER, SHALL USE THIS SOFTWARE INCLUDING ANY FUTURE RELEASES, REVISIONS, UPDATES OR ENHANCEMENTS TO THE SOFTWARE (COLLECTIVELY, "THE SOFTWARE") ACCORDING TO THE TERMS OF THIS AGREEMENT ("THIS AGREEMENT"). BY INSTALLING OR USING THE SOFTWARE, OR CLICKING ON THE "ACCEPT" BUTTON, YOU ARE AGREEING TO BE BOUND BY THESE TERMS. IF YOU DO NOT ACCEPT THE TERMS OF THIS AGREEMENT, YOU MAY NOT INSTALL THIS SOFTWARE INTO ANY COMPUTER.

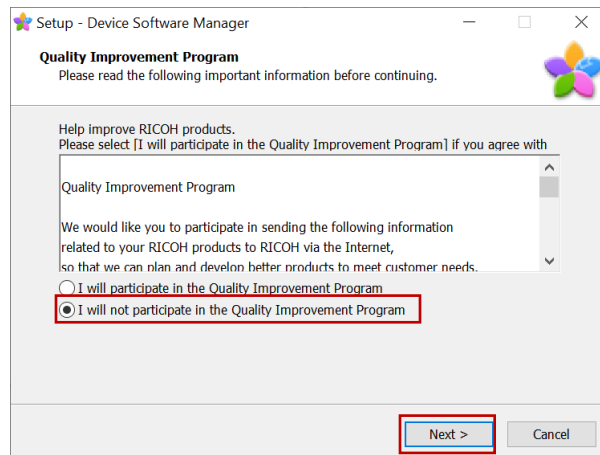
1. Grant of License
The Software is licensed for use by you for the equipment packaged with the Software or designated by its supplier or us ("the Equipment"). You are permitted to use the Software on any computer which permits electronic access to the Equipment. You are not permitted to rent or lease the Software or to transfer your rights under this license to a third party.

2. Duration
The license of the Software under this Agreement is effective until terminated. The license of the Software under this Agreement will terminate where you fail to comply with the terms of this Agreement. Upon

Run Driver Installer after installation
 View ReadMe after installation

Accept Agreement and Install

About Cancel



Setup - Device Software Manager

Quality Improvement Program
Please read the following important information before continuing.

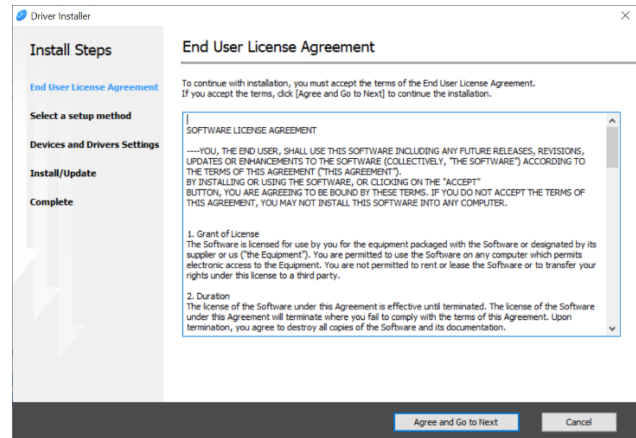
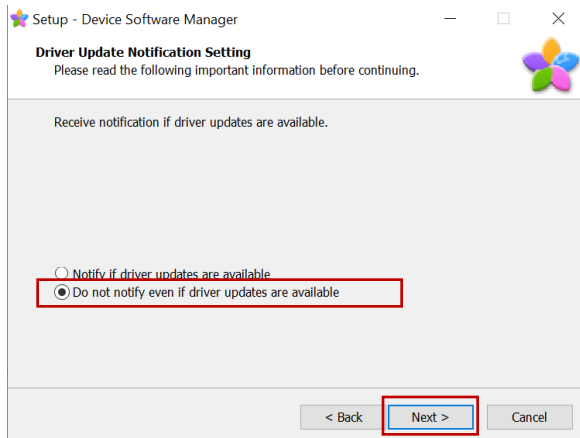
Help improve RICOH products.
Please select [I will participate in the Quality Improvement Program] if you agree with

Quality Improvement Program

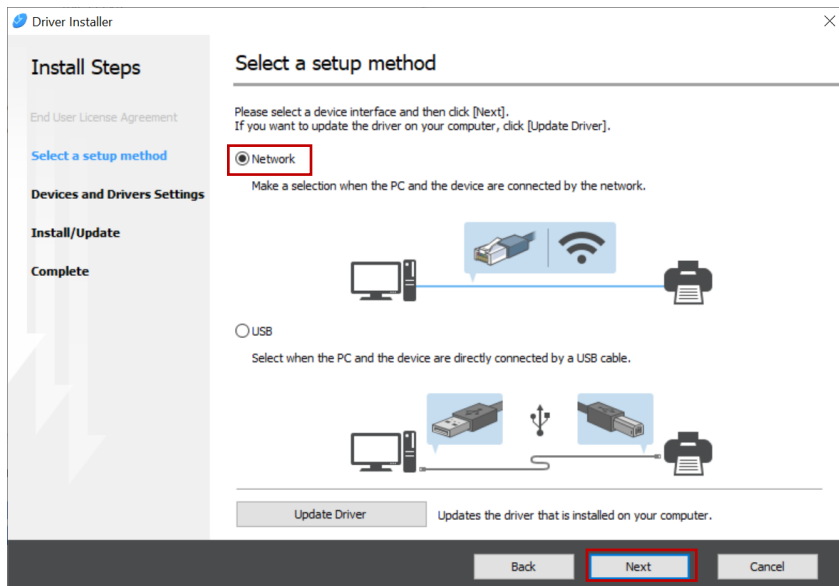
We would like you to participate in sending the following information related to your RICOH products to RICOH via the Internet, so that we can plan and develop better products to meet customer needs.

I will participate in the Quality Improvement Program
 I will not participate in the Quality Improvement Program

Next > Cancel



3) Select Network as setup method

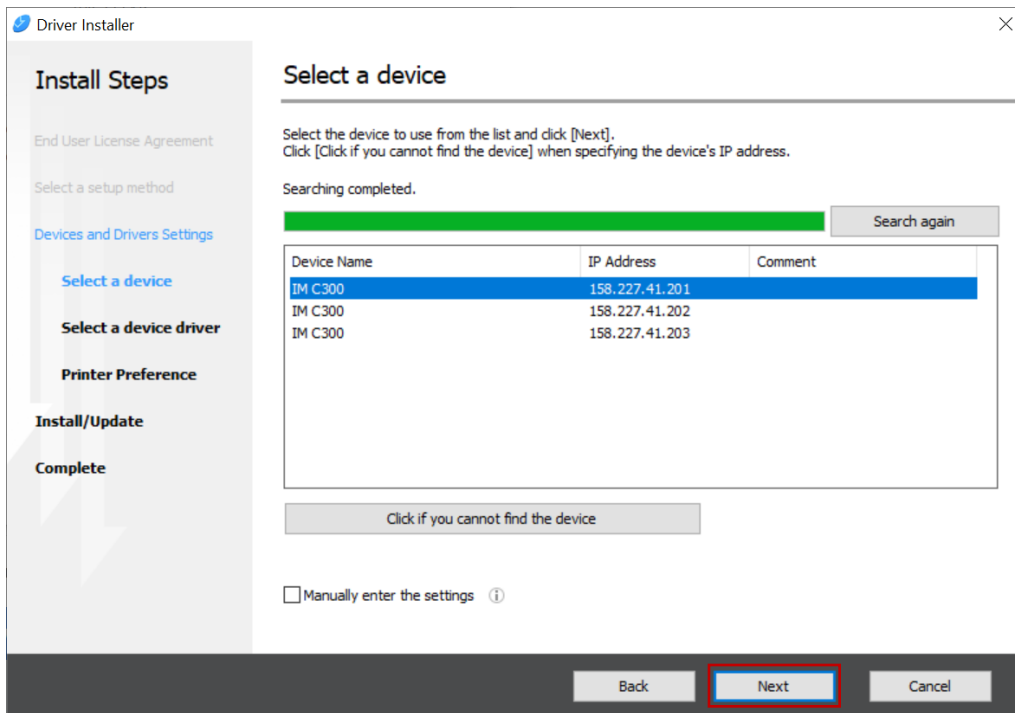


4) Select the IP address of the printer:

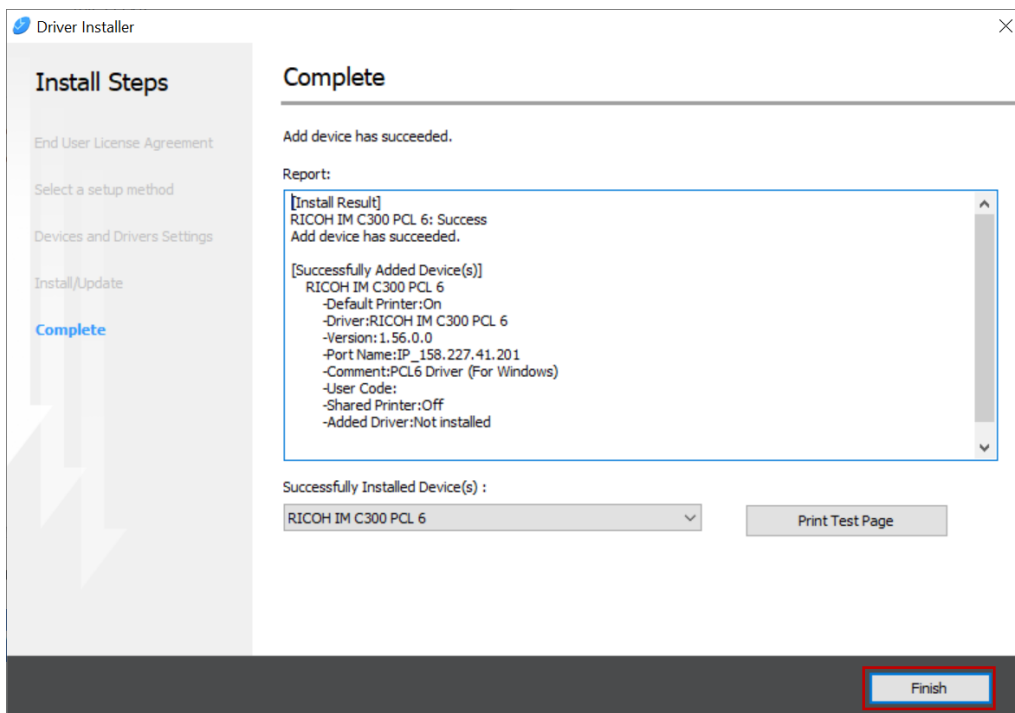
158.227.41.201 → 1st Floor

158.227.41.202 → Only for Administration Staff

158.227.41.203 → Ground Floor



If no printer is found Click the “Click if you cannot find the device” button to enter the IP manually
5) The driver will be installed automatically.



6) When finished, go to Windows → Settings → Devices → Printers → Select the printer → Manage → → “Printing Preferences” and under the “Basic” tab add your Group Printing Code clicking on the “User Code Setting...” button.

← Settings

— □ ×

🏠 RICOH IM C300 PCL 6

Manage your device

🗉 Get help

Printer status: Idle

Open print queue

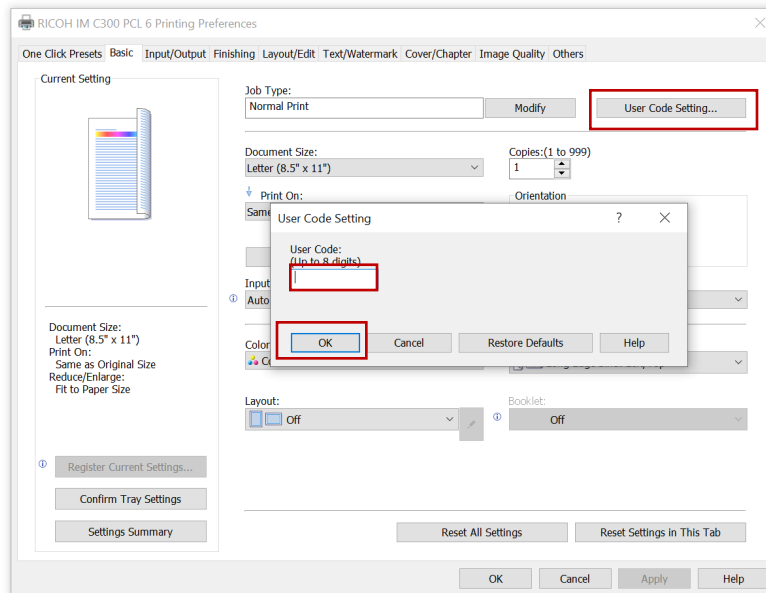
Print a test page

Run the troubleshooter

Printer properties

Printing preferences

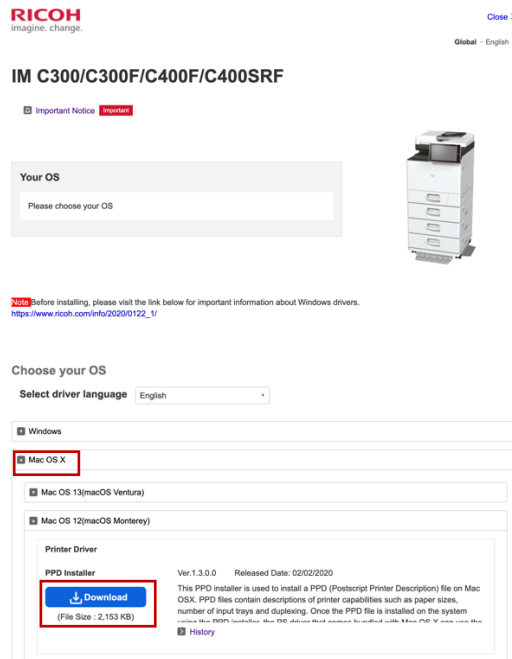
Hardware properties



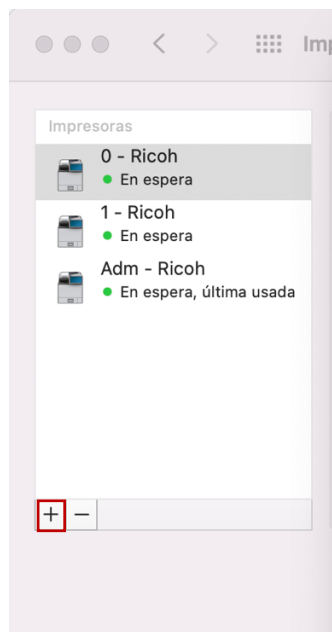
2022 IBF Ricoh IM C300 Printer Installation for macOS

1) Download and install the Ricoh IM C300 driver for macOS

http://support.ricoh.com/bb/html/dr_ut_e/re2/model/imc300/imc300.htm



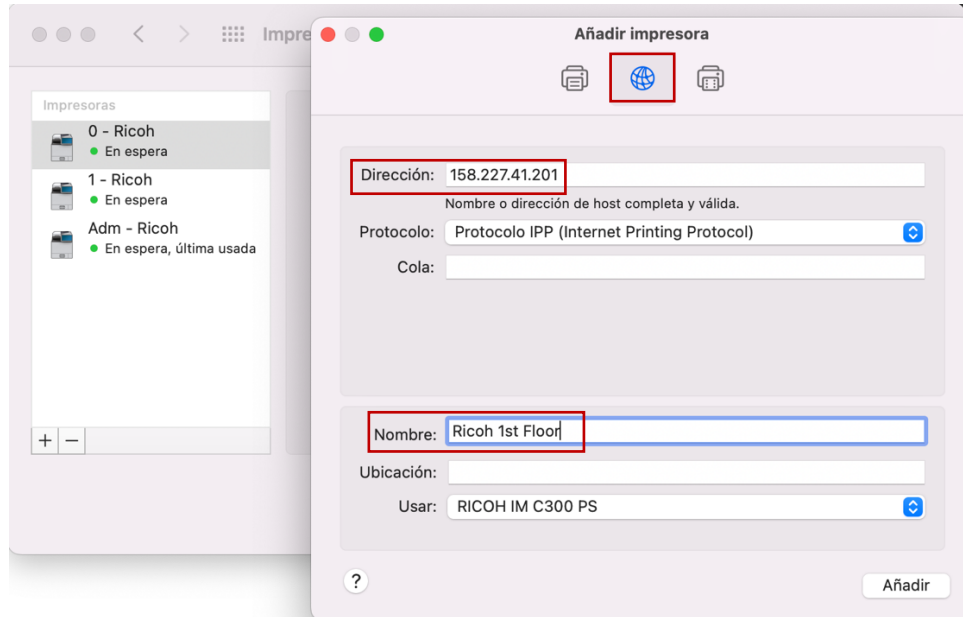
2) Go to System Preferences → Printers and add a new one clicking in the + button.



3) Select the “world” icon and enter the IP address the printer, a name for it and click on “Add”:

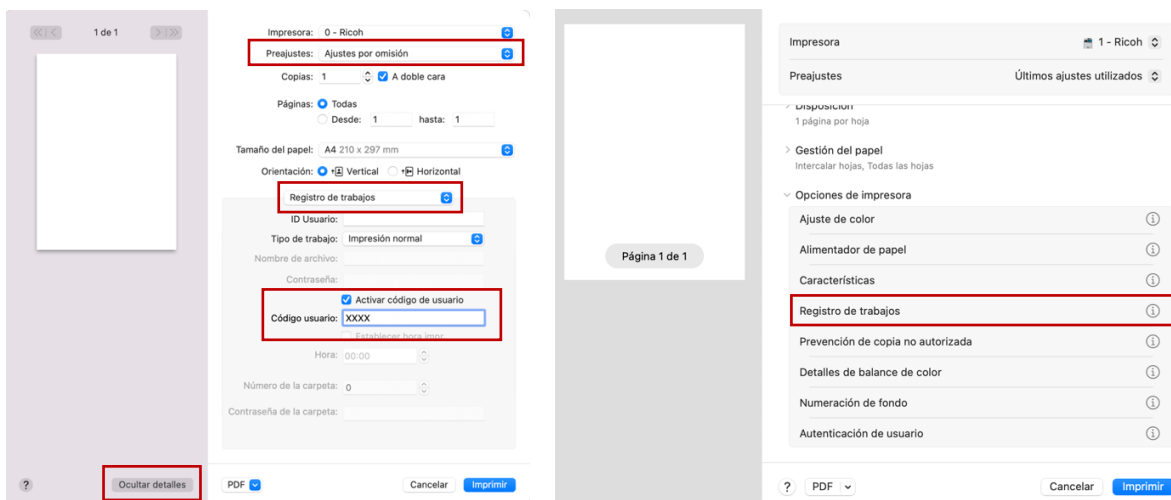
158.227.41.201 → 1st Floor

158.227.41.203 → Ground Floor



4) When finished, try to print something and in the printer preferences dialog, select show details at the bottom (if not selected), go to Job Log, activate the User code and add your group user code. You can save this code as a preset to avoid entering the code every time you print something.

From macOS 13 (Ventura) on the JobLog Menu could be found in the Printers Options submenu (right picture)



2022 IBF Ricoh IM C300 Printer Installation for Linux

1) Open a web browser and enter the following address:

http://localhost:631

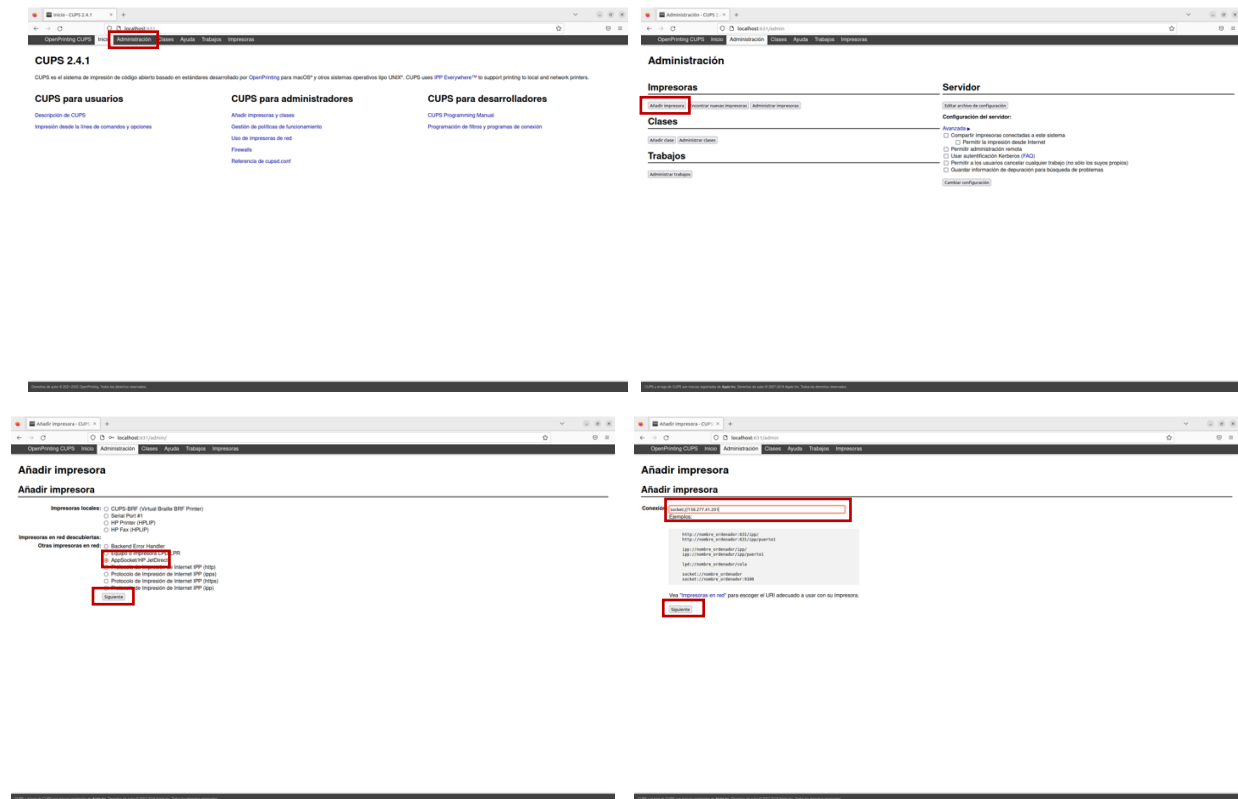
(If the webpage asks at any moment for a username and password, you should enter your computer username and password)

2) Go to “Administration” → “Add Printers” → And select “AppSocket/HP JetDirect” → Enter the Printer IP as follows:

socket://158.227.41.201 → 1st Floor

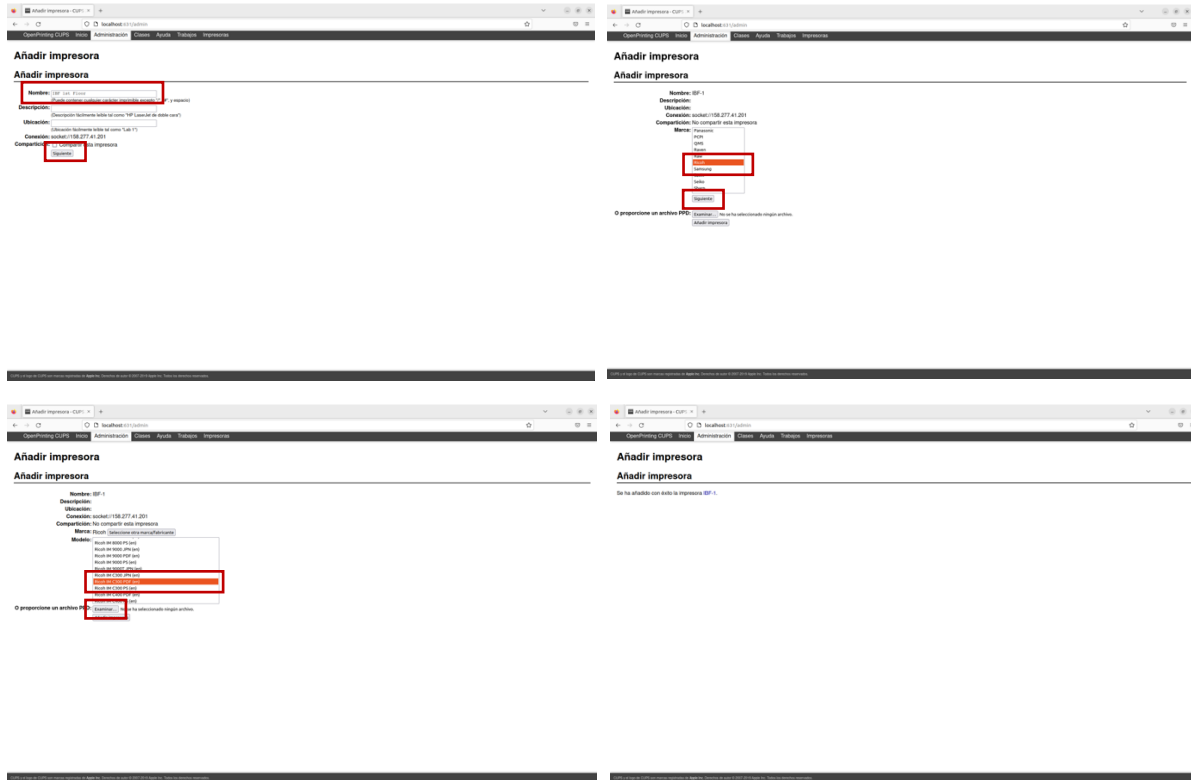
socket://158.227.41.202 → Only for Administration Staff

socket://158.227.41.203 → Ground Floor



3) Write a Name for the Printer → Select the brand of the printer (Ricoh) → Select the model (“Ricoch IM C300 PDF (EN)”). If not in the list, download the PPD file from here and load it:

https://www.openprinting.org/printer/Ricoh/Ricoh-IM_C300



4) After the installation go to Administration → Admin Printers → Select the Printer → Set Predefined Setups → JCL (or Job Log) → Select “User Code (up to 8 digits): Custom UserCode” → Write your Group Printers Code → Change predefined Setups

